

# ComNav®



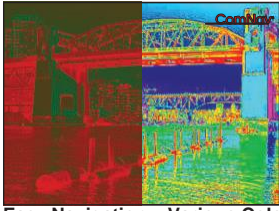
## V7

### High Sensitivity Thermal Night Vision and Low Light Cameras

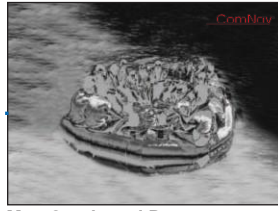
### Multi-Axis Gyro Stabilized Images

- High performance Gyro stabilized video images
- Ultra-sensitivity Shutterless Thermal Camera
- Light Intensifier electron tube camera
- 2x Ultralow Lux day camera with 40x zoom
- Objects seen through fog and smoke
- Search & Rescue, Law enforcement and Ice detection applications
- Radar slaving option
- Parallel view function
- Crystal clear thermal images in many different color schemes
- Continuous Pan and Tilt 360° provides seamless view coverage
- 100 Hz frame rate and 1000-line resolution give unmatched clarity
- DVI, VGA, HDMI, composite analog video output
- Marineized housing withstands the harshest conditions
- IP network control Interface capability
- 3 Axis Joystick control plus proportional Touch joystick
- 2-year warranty





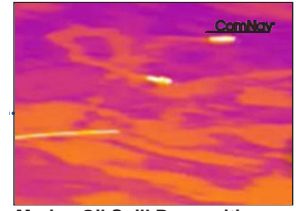
**Easy Navigation – Various Colors**  
Assists by enhanced visual capability in darkest environments. Allows for increased maneuvering when twilight docking. Long range distance awareness in low light conditions.



**Man Overboard Rescue**  
Can assist with faster response times in man overboard search and rescue operations.



**Security**  
Helps to identify and track vessels or objects on perimeter security. Collision avoidance, vessel and crew protection.



**Marine Oil Spill Recognition**  
Helps identify affected areas to effectively assist crews with recovery and clean-up efforts.

### THERMAL IMAGING PERFORMANCE

**Sensor Type:** Silicon CMOS Uncooled Chip, 640 x 480 pixels, NETD < 40 mK @ Broadband, LWIR, 30 – 100 FPS

**Field of View:** 25° (Horizontal), 19° (Vertical)

**Focal Length:** 25/35 mm

**E Zoom:** ≤ 8X

**Image Processing:** Video grabbing, recording, multi-view Real-time, PIP, video-analysis

### DAYLIGHT IMAGING SPECIFICATIONS

**Detector Type:** Ultra low light Long range colour camera - Superchip II SSNR

**Resolution:** 1000-line resolution

**Minimum Illumination:** > 0.01 LUX @ colour

**Zoom:** 30 x optical zoom; 40 x digital zoom

**FOV:** 30° x 30°

### LIGHT INTENSIFIER IMAGING SPECIFICATIONS

**Detector Type:** SuperGen Intensifier Electron Tube SSNR

**Spectral Range:** 200 – 900 nm

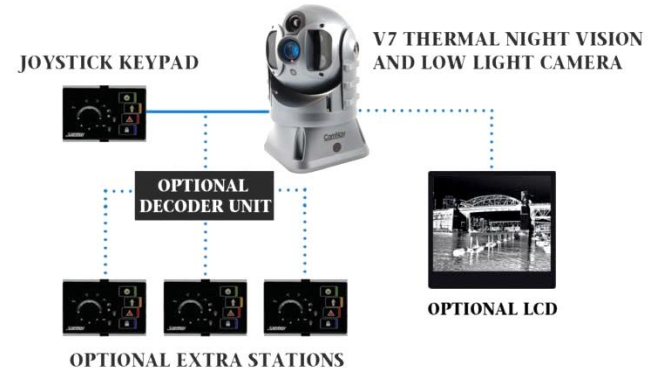
**Window Type:** Sapphire Glass

### SYSTEM SPECIFICATIONS

**Video Tracking:** Optional Features

**Pan/Tilt Coverage:** Ultra High Response Gyro - 360° Continuous Pan and tilt @ 100%/s

**Integration Options:** IP control by APP remote controller (option) Integration with industry standard multi-navigation displays optional converter interfaces NMEA 0183 serial communications for radar tracking, gyrocompass communication, etc. ComNav GNSS Rate Compass option



### ENVIRONMENTAL

**Operating Temp Range:** -20° to 60°Celsius, ultra-strength lightweight aluminum alloy body, deep anodized surface

**Storage Temp Range:** -50° to 80° Celsius

**Auto Window Defrost:** Self-cleaning windows, w/ electron beam surface treatment

### DIMENSIONS

**Camera:** 180 x 180 x 310 mm

**Weight:** 4.9 kg

### POWER

**Supply Voltage:** 9-24 VDC

**Power:** 50 Watt

### DETECTION RANGE

**Human (Half body in water):** 1+ km

**Human (Full body):** 2+ km

**Vessel:** 3+ km

### OTHER FEATURES

- External Microphone
- 2-year warranty

# ComNav®



### ComNav Marine Ltd.

#15 – 13511 Crestwood Place,  
Richmond British Columbia • Canada • V6V 2G1

Phone: 604-207-1600 • Fax: 604-207-8008  
E-mail: sales@comnav.com

[www.comnav.com](http://www.comnav.com)

**Worldwide Service**

Printed in Canada

Represented by: