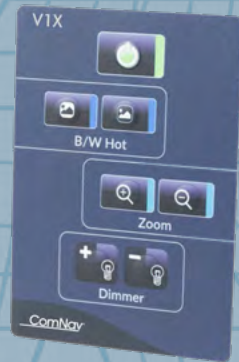


ComNav®



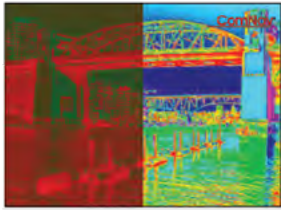
V1X

Thermal Night Vision Camera System

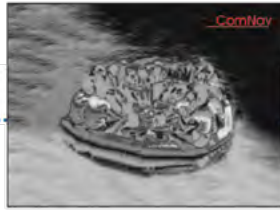
Search & Rescue Surveillance Safety

- Crisp crystal-clear thermal images with instant stabilization
- Color view modes in Black & White, Iron, Rainbow, Human Body Detect, Anti-Rain & Fog
- Superior image quality (under all types of weather and light conditions)
- Rugged, compact and shock resistant
- Fully sealed waterproof
- High-sensitivity thermal camera with digital electronic zoom
- Sees through smoke and fog
- Digital noise reduction with enhanced image processing
- Control panel with up to 4x e-zoom
- Detection: 1km Human, 3km Vessel, 0.8km identification
- Video composite PAL / NTSC
- IP output RJ45
- IP wireless control with tablets and smartphones (Android or iOS)
- Optimized for search & rescue, law enforcement, surveillance and night navigation applications
- Video streaming MPEG-H264 / WiFi
- 100Hz frame motion refresh rate
- 720 x 576 resolution gives unmatched clarity
- Marineized anti-corrosion aluminum alloy housing, IP67 rated
- IP network control Interface capability
- CE certified and RoHs compliant
- 2-year warranty





Easy Navigation – Various Colors
Assists by enhanced visual capability in darkest environments, allows for increased maneuvering when twilight docking; long range distance awareness in low light conditions;



Man Overboard Rescue
Can assist with faster response times in man overboard search and rescue applications;



Security
Helps to identify and track vessels or objects on perimeter security; collision avoidance; vessel and crew protection;



Situational Awareness
Anti-piracy security tool; allows for comprehensive multi-zone monitoring, long range viewing and greater night vision; iceberg detection; fire detection;

THERMAL IMAGING PERFORMANCE:

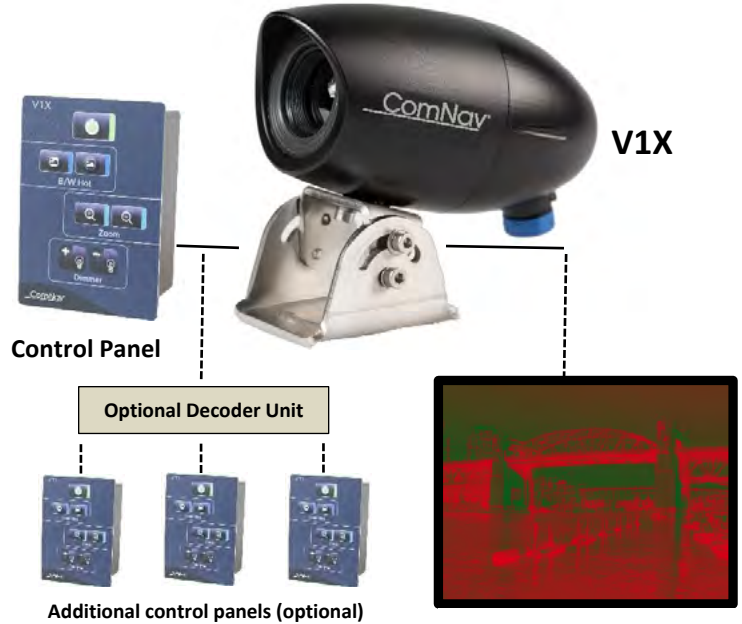
Sensor Type: Silicon CMOS uncooled chip
Field of View: H Fov = 25°, V Fov = 19° (@ wide zoom)
Focal Length: 25 mm
Special Vision: Anti-rain, Anti-Fog, Human body recognition mode
Lens Type: Athermalized Diamond Surface Coating
Zoom: Continuous ultra-digital up to 4x
Resolution: 720 x 576 – 414720 pixel – 17µm pitch
Frame Rate: 100Hz Refresh
Frame Technology: Shutter-less

Power:

Power Supply: 12/24 V
Power Consumption: 3 Watts

ENVIRONMENTAL:

Operating Temp Range: -30° degree to +60° degree Celsius
Storage Temp Range: -35° degree to +75° degree Celsius
Enclosure & Mounts: ultra-strength lightweight aluminum alloy IP67; deep anodized surface treatment



Control Panel

Optional Decoder Unit

Additional control panels (optional)

Optional LCD monitor
Sunlight viewable

DIMENSIONS:

Camera: 137 x 70 x 70mm
Weight: 0.9 kg
Keypad: 80 x 60 x 120mm

Vessel Detection: 3+ km
Human Detection: 1+ km
Identification: 0.8+ km

ComNav Marine Ltd.
 #15-13511 Crestwood Place,
 Richmond, British Columbia • Canada • V6V 2G1
 Phone: 604-207-1600 • Fax: 604-207-8008
 E-mail: sales@comnav.com

www.comnav.com
Worldwide Service

Printed in Canada



Represented by:

Specifications subject to change without notice

March 2019