

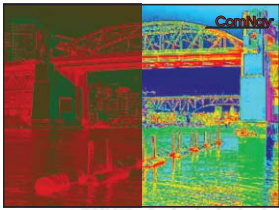
ComNav[®]



V5 Thermal Night Vision & Low Light Camera Systems

Gyro Stabilized Crystal Clear Vision

- Crisp thermal images in Black Hot, White Hot, Rainbow, Iron
- Uncooled thermal detector
- Unbeatable 30Hz frame rate with unmatched sensitivity of <math><50\text{ mK}</math>
- Available in 9Hz
- ComNav image enhancement provides superior high resolution in absolute darkness, light fog, smog or low light environments
- Easy touch digital zoom x 4 Thermal Camera
- Rugged construction exceeds military standards to operate in challenging navigation environments, lightweight aluminum design with mono-crystalline germanium tempered glass weatherproof to IP67
- 360 degrees continuous pan and $\pm 90^\circ$ tilt provides seamless view coverage
- Low-Lux, high resolution integrated camera with 36x optical zoom coupled with 12x digital zoom, giving sharp magnification of up to 432x
- LowLight window with built-in heater for auto defrost in freezing environments
- Scene Selection Modes: Auto, Day, Night
- Home position and auto scan sweeps can be easily programmed. Camera system can be parked and protected when not in use
- LCD and keypad backlighting adjustable for night applications
- Optional up to four station remote joystick control units and up to four cameras in multiple configurations
- Compass data input with on screen heading display
- IP Network Control interface capability
- NMEA0183 and NMEA2000 compatible
- CE certified and RoHS compliant
- 2 year warranty



Easy Navigation – Various Colors
Assists by enhanced visual capability in darkest environments, allows for increased manoeuvring when twilight docking; long range distance awareness in low light conditions;



Man Overboard Rescue
Can assist with faster response times in man overboard search and rescue applications;



Security
Helps to identify and track vessels or objects on perimeter security; collision avoidance; vessel and crew protection;



Situational Awareness
Anti-piracy security tool; allows for comprehensive multi-zone monitoring, long range viewing and greater night vision; iceberg detection; fire detection;

THERMAL IMAGING PERFORMANCE:

Focal Plane Array Detector: Uncooled Vanadium Oxide (VOx) Microbolometer
Pixel: 640 X 480
Field of View: 20.6°(H) x 15.5°
Electronic Zoom: 1 - 4 x
Thermal Sensitivity: <50 mK @ f/1.0 @ 25°C
Spectral Range: 8 - 14 μm
Focus Range: 0.5 - infinity
Detection Range: Human 1 Km Vessel 4 Km

LOW LIGHT CAMERA:

Detector Type: ¼" HAD CCD
Lines of Resolution: 752 (H) x 582 (V)
Minimum Illumination: 0.01 LUX / F1.4
Field of Pan View: 57.8° (@1x), 1.7° (@36 x)
Optical Zoom: 36 x (maximum zoom 432 x)
Digital Zoom: 12 x (maximum zoom 432 x)

SPECIFICATIONS:

Stabilization: Gyro compensated optimized for high speed vessels
Operating Voltage: 10 to 30 VDC
Power Consumption: 10 W standby 25 W nominal 50 W max with heaters operating
Operating Temperature: -25°C to +55°C
Storage Temperature: -40°C to +85°C
Waterproof: Sealed to IP67 standards; marine cables & corrosion resistant connectors
Wind Resistance: 100 Knots
Encapsulation: Sand & dust proof Salt mist & humidity
Shock Resistance: 15 g vertical; 9 g horizontal
Additional built-in features: Auto window de-icing & defrost, Lightning & surge protection
Compliance CE, RoHS

JOYSTICK KEYPAD



OPTIONAL DECODER UNIT



OPTIONAL EXTRA STATIONS

V5 THERMAL & LOW LIGHT CAMERA



OPTIONAL LCD

DIMENSIONS:

Camera: 23.4cm/9.21 inches in diameter
 39.7cm/15.6 inches in height
Joystick Keypad: 16cm (6.1 inches) x 12cm (4.5 inches)
Weight: camera: 10 kg



ADDITIONAL FEATURES:

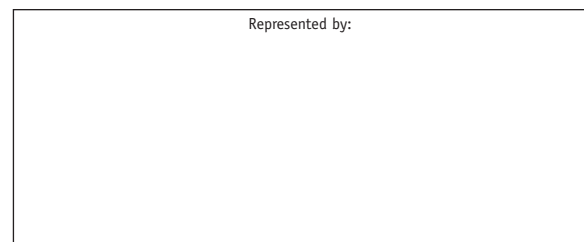
- Multiple Thermal Display Modes
- Multi-protocol decoder: PELCO-P/D, RS422
- Power-off memory function and programmable home position
- On Screen Display password protection
- Auto internal heater for cold temperatures
- Extra remote station capability
- Accurate on screen heading information via NMEA0183/NMEA2000 interface to vessels compass
- Radar tracking and target tracking (optional)

MAXIMUM RANGE:

Human Detection: 1059m
Recognition: 400m
Identification: 212m

Vehicle Detection: 13471m
Recognition: 5051m
Identification: 2694m

Represented by:



ComNav®



ComNav Marine Ltd.
 #15-13511 Crestwood Place,
 Richmond, British Columbia • Canada • V6V 2G1
 Phone: 604-207-1600 • Fax: 604-207-8008
 E-mail: sales@comnav.com

www.comnav.com
Worldwide Service

Printed in Canada

Specifications subject to change without notice

Rev: March 2017