

ComNav®



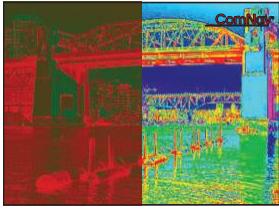
V4

High Sensitivity Thermal Night Vision and Low Light Cameras

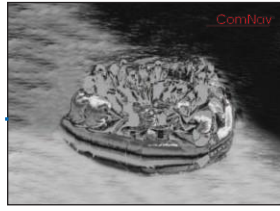
Gyro-Stabilized Camera Systems

- Gyro stabilized video images
- Uncooled high sensitivity Thermal Camera
- Light Intensifier electron tube camera
- High-sensitivity Thermal camera with digital zoom
- Objects seen through fog and smoke
- Search & Rescue, Law enforcement and Ice detection applications
- Radar slaving option
- Video on IP Output
- Crystal clear thermal images in many different color schemes
- Continuous Pan and Tilt 360° provides seamless view coverage
- 100 Hz frame rate and 1000-line resolution gives unmatched clarity
- DVI, VGA, HDMI, composite analog video output
- Marineized housing withstands the harshest conditions
- IP network control Interface capability
- 3 Axis Joystick control plus proportional Touch joystick
- 2-year warranty





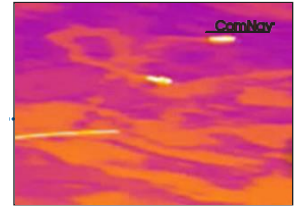
Easy Navigation – Various Colors
Assists by enhanced visual capability in darkest environments. Allows for increased maneuvering when twilight docking. Long range distance awareness in low light conditions.



Man Overboard Rescue
Can assist with faster response times in man overboard search and rescue operations.



Security
Helps to identify and track vessels or objects on perimeter security. Collision avoidance, vessel and crew protection.



Marine Oil Spill Recognition
Helps identify affected areas to effectively assist crews with recovery and clean-up efforts.

THERMAL IMAGING PERFORMANCE

Sensor Type: Silicon CMOS Uncooled Chip,
640 x 480 pixels, NETD < 40 mK @
Broadband, LWIR, 30 – 100 FPS

Field of View: 25° (Horizontal), 19° (Vertical)

Focal Length: 25/35 mm

E Zoom: ≤ 8X

Image Processing: Video grabbing, recording, multi-view
Real-time, PIP, video-analysis

DAYLIGHT IMAGING SPECIFICATIONS

Detector Type: Ultra low light Long range colour camera
- Superchip II SSNR

Resolution: 1000-line resolution

Minimum Illumination: > 0.01 LUX @ colour

Zoom: 30 x optical zoom; 40 x digital zoom

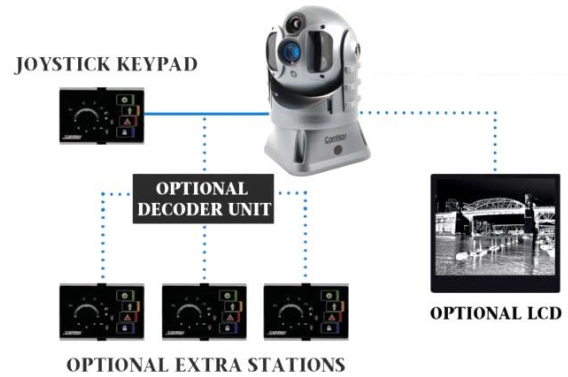
FOV: 30° x 30°

SYSTEM SPECIFICATIONS

Video Tracking: Optional Features

Pan/Tilt Coverage: Ultra High Response Gyro - 360°
Continuous Pan and tilt @ 100°/s

Integration Options: IP control by APP remote controller (option)
Integration with industry standard multi-navigation displays optional converter interfaces
NMEA 0183 serial communications for radar tracking, gyrocompass communication, etc.
ComNav GNSS Rate Compass option



ENVIRONMENTAL

Operating Temp Range: -20° to 60° Celsius, ultra-strength lightweight aluminum alloy body, deep anodized surface

Storage Temp Range: -50° to 80° Celsius

Auto Window Defrost: Self-cleaning windows, w/ electron beam surface treatment

DIMENSIONS

Camera: 180 x 180 x 310 mm

Weight: 4.9 kg

POWER

Supply Voltage: 9-24 VDC

Power: 50 Watt

DETECTION RANGE

Human (Half body in water): 1+ km

Human (Full body): 2+ km

Vessel: 3+ km

OTHER FEATURES

- External Microphone
- 2-year warranty

ComNav®



ComNav Marine Ltd.

#15 – 13511 Crestwood Place,
Richmond British Columbia • Canada • V6V 2G1

Phone: 604-207-1600 • Fax: 604-207-8008
E-mail: sales@comnav.com

www.comnav.com

Worldwide Service

Printed in Canada

Represented by: